



Service Letter

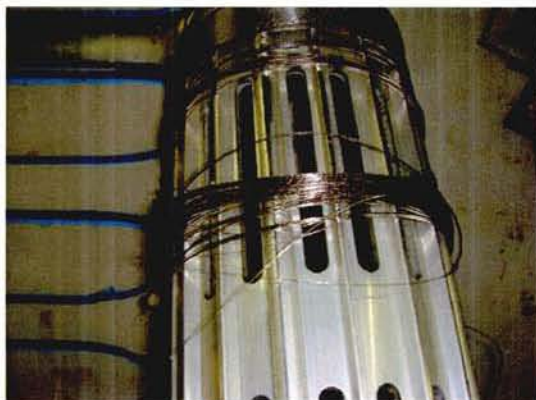
SL07-481/OLS
June 2007

**Lubricating Oil Filter
with Notch Wire Element**
Action Code: At First Opportunity

Dear Sirs

During the last few months, MAN Diesel in Copenhagen has received reports of several cases where serious damage to crankshaft bearings and journals has been caused by broken and wrapped-off wire from lubricating oil filters of the Notch Wire Element type.

A lubricating oil filter of the Notch Wire Element type is characterised by the filter element, which has a specially treated, thin stainless steel wire wrapped around its cylindrical filter frame.



Notch wire wrapped off the element



Wrapped-off notch wire in engine lube oil pipe system

HEAD OFFICE (& postal address)
MAN Diesel A/S
Teglholmegade 41
2450 Copenhagen SV
Denmark
Phone: +45 33 85 11 00
Fax: +45 33 85 10 30
manbw@dk.manbw.com
www.manbw.com

PrimeServ
Teglholmegade 41
2450 Copenhagen SV
Denmark
Phone: +45 33 85 11 00
Fax: +45 33 85 10 49
diesel-service@dk.manbw.com

PRODUCTION
Teglholmegade 35
2450 Copenhagen SV
Denmark
Phone: +45 33 85 11 00
Fax: +45 33 85 10 17
manufacturing/cph@dk.manbw.com

FORWARDING & RECEIVING
Teglholmegade 35
2450 Copenhagen SV
Denmark
Phone: +45 33 85 11 00
Fax: +45 33 85 10 16
MAN Diesel A/S
Denmark
Reg. No.: 39661314



In most of the reported cases, the breakdown of the filter occurred shortly after maintenance or manual cleaning of the filter.

In the light of these incidents, we recommend the following:

At first opportunity:

- Inspect filter elements for damage, and make sure that the filter manufacturer's maintenance and safety instructions are observed.

During normal service:

- Inspect filters according to the filter manufacturer's inspection intervals.
- Daily observe and record the number of flushing times if applicable.
- Daily observe and record the differential pressure across the filter.
The filter should be inspected if a sudden drop of the differential pressure is recorded. However, it should be noted that, depending on filter type, number of elements, etc., a wire may also break without causing a drop in the differential pressure.
- The Notch Wire Element filter should be inspected if the filter in the back flushing line (if applied) is to be changed more frequently than normal.

Questions or comments relating to this service letter should be directed to our Technical Service Dept. (4100) or Marine Installation Dept. (2160).

Yours faithfully

MAN Diesel A/S

A handwritten signature in black ink, appearing to be "C. Egeberg".

Carl-Erik Egeberg

A handwritten signature in blue ink, appearing to be "Peter Michael Nielsen".

Peter Michael Nielsen